

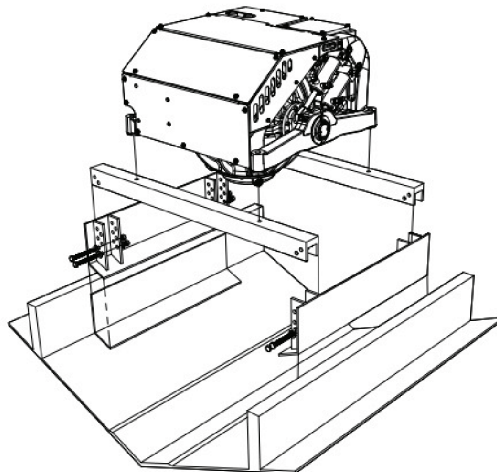
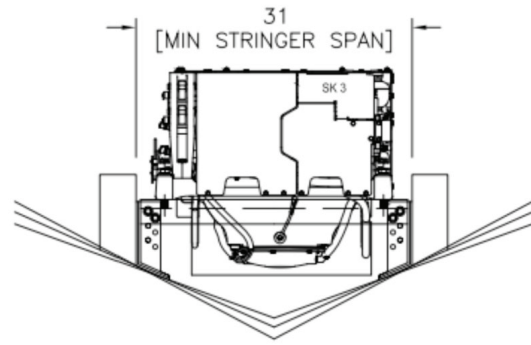
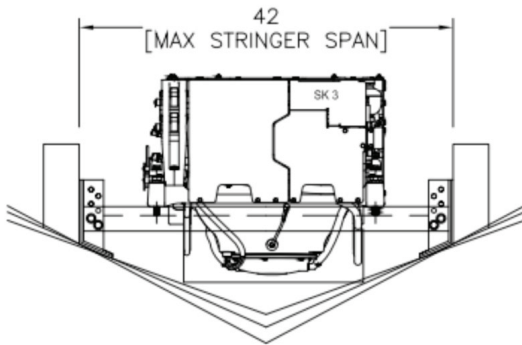


*Exclusive distributor for Torx Marine Seakepper mounting system*

**+1 (833) TRI-GYRO**  
**triseastabilizers.com**

## 'TT3' TORXTUBE 3 & 'TT2' TORXTUBE 2 SEAKEEPER 2/3 FOUNDATION KIT

Fits deadrise 20-28 degrees, bonded, installed near bulkhead.  
Ref. installation 'TT3-600-130', 'TT2-600-130'



## What comes in a Kit?

- (2) Brackets, 6061-T6 aluminum, pre-fabricated, powder coat white
- (2) Cross-Bars, 6061-T6 aluminum, custom extrusion, powder coat white
- 316 SS Bolting hardware.

\*\* does **NOT** include Heli-Coils or bolts for SK unit \*\*

ITEM	QTY	DESCRIPTION
	2	Brackets, 6061-T6 aluminum, pre-fabricated, powder coat white (Backside is sandblasted - ready for bonding)
	2	Cross-Bars, 6061-T6 aluminum, custom extrusion, powder coat white (43" - cut to length)
	4	Bolts
	4	Shoulder Bolts
	12	1/2-13 Fin Hex Nuts - 316 SS
	20	1/2 Sae Flat Washers - T-316

What type of glue and how much is required to bond the brackets?

490ml cartridges of Plexus, MA590 or SCI Grip (sg300).

To purchase SCI Grip, call Ocean5 at 772.692.8551

Please review the following drawings *before* installation :

- TORX APPLICABILITY RANGE AND INSTALLATION
- TORX TUBE INSTALLATION

